



Modular Healthcare System

ICU / NICU



CERTIFICATIONS:

Our products are engineered keeping in mind all the necessary quality criteria followed internationally/ nationally & as per NABH standards. Quality regulations are strictly adhered to right from the stage of procurement of raw materials to the final dispatch of the goods. We have certification for ISO9001:2008, ISO13485:2003, ISO18001:2007, CE and GMP.

ABOUT US:

● We are a team of Engineers having vast experience in the medical engineering field, and are dedicated towards offering products which are highly precise and well engineered. The pre-engineered Modular operation theatre not only solves the problem but also facilitates speedy construction, high quality finish in prevention of contamination build up, long durability, robust and flexible designs for future expansion, ease of maintenance, etc.

We also excel in providing Hospital design, Modular ICU, NICU, IVF Rooms, Hospital Furniture, Medical Gas Pipeline system and service support in the repair and maintenance of Medical & Hospital Equipment of any make. We also provide annual maintenance contracts for Modular O.T. & I.C.U. equipments. Our excellence in all spheres of our operations has made us a renowned name in the medical field.

● Complete Hospital Solution under one roof.

● Company is ISO9001:2008 certified and its products are CE marked apart from the other certifications.



WHY US:

Wide experience in Hospital equipments, more than 18 years in various Industries.

In house design & development team of experienced Engineers.

Own Manufacturing unit in working area of 4843 sq feet.

Working staff of more than 20 technical personnel.

Quality products with International Standards.

Timely delivery & Prompt service.

Wide range of Products with Customized Product design.

All India installations with sales & service support.



PRODUCTS & SERVICES

- ❑ *Trunkey hospital projects*
- ❑ *Hospital design consultancy*
- ❑ *Hospital interior & renovations*
- ❑ *AMC & CMC of Modular OT*
- ❑ *ICU, NICU, IVF, clean rooms*
- ❑ *medical gas pipeline system*
- ❑ *Hospital Steel Furniture*
- ❑ *Customized solution*

Medical Gas Pipeline Products

- Central Medical Gas Pipeline*
- Area Alarm Panels*
- Area Valve Panels*
- Gas Terminal Units (OUTLETS)*
- Gas Manifold System*
- Gas Control Panels*
- Flow meters & Suction Units*
- Bed Head Panels*

Modular operation theatre (As per NABH Guideline)

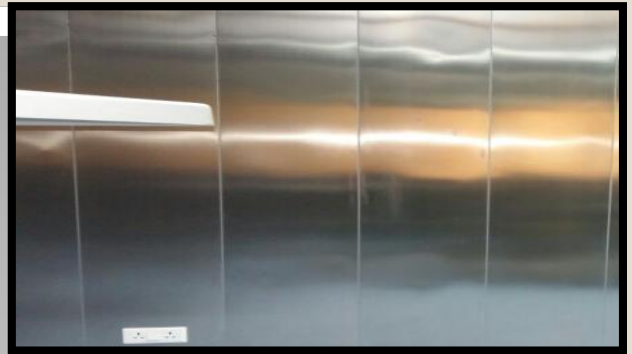
- Modular wall & Ceiling panels*
- Laminar air flow system*
- Bacteria resistance paint coatings*
- Vinyl floorings*
- Ceiling pendant system*
- MOT control panels*
- X-ray film viewers*
- Peripheral lights*
- Writing list board*
- Pressure dampers*
- Hermetically sealed doors*
- Storage cabinets*
- Surgical scrub stations*
- Pass box (hatch box)*
- OT instrument cabinet*
- OT trolleys*
- OT crash cart*
- OT surgical lights*
- Operating tables*
- Anesthesia machines*
- Autoclave*

ICU/NICU/CLEAN ROOM Products

- Modular wall & Ceiling panels*
- Laminar air flow*
- Air Filtration Systems*
- Fan Filter Units*
- Bacteria resistance paint coatings*
- Vinyl floorings*
- Ceiling pendant system*
- Track Curtain Partition system*
- X-ray film viewers*
- Peripheral lights*
- Writing list board*
- Hermetically sealed doors*
- Storage cabinets*
- Surgical scrub stations*
- ICU instrument cabinet*
- ICU trolleys*
- ICU crash cart*
- ICU Beds*
- ICU Bed Side Lockers*
- NICU Baby Warmers/Phototherapy*
- Pressure Module-Negative & Positive*
- Isolation Rooms*

The wall and ceiling panels can be made out of following material as per customer requirement.

- 1. Galvanized Steel Panels backed by Gypsum: 1.6mm thick galvanized steel sheet backed by 9mm/12mm thick Gypsum board.**
- 2. Stainless Steel Panels backed by Gypsum: 1.6mm thick Stainless steel sheet panels backed by 9mm/12mm thick Gypsum board.**
- 3. PUF In-filled Stainless Steel Panels: High density PUF in-filled between two sheets of Stainless steel sheet.**
- 4. PUF In-filled GI/PPGI Panels: High density PUF in-filled between two sheet of GI/PPGI sheet.**
- 5. PUF In-filled High Pressure Laminate Panels: High density PUF in-filled between two sheet of High Pressure Laminate sheet.**
- 6. Solid High Pressure Laminate Panel: 12mm thick solid high pressure**
- 7. Solid Mineral Surface (SMS)**
- 8. Aluminium Extruded True Modular PPGI / SS / HPL Panel – PUF In filled with Aluminium Extruded Profile. It is very easy to assemble, easy to re-assemble one place to other place, truly Modular with Aluminium extruded jointing section, Aluminium extruded Ceiling jointing section, Heavy duty aluminium coving with internal & External Corners.**





ICU/NICU

ICU/ NICU with Antibacterial Paint Coating

Filling of all joints & cavities with metal epoxy filler and sanded flush to provide a seamless finish including one primer and three coats of Imported antibacterial & antifungal paint equivalent to a minimum dry film thickness of 300 microns. Modular Room will be fully joint less, seamless & washable with no deep corners. Colour as per customer's requirement.





ICU / NICU

TRACK & CURTAINS



***Stain-free
Washable Curtain***



Aluminium Track & Accessories





ICU / NICU TRACK & CURTAIN in ICU





ICU / NICU

Customized Bed Head Panels

MHS Bed Head Panels having following features:-

Made of Aluminum extruded Profiles

Duly Powder Coated

Fully Modular Format

Customized design as per site condition & requirement

Available in continuous BHP

Provision for Gas Outlet, Electrical, NCS, Data Points,
Medical Rail for Suction Clamp, Document Basket, IV Pole,
Infusion Pump Pole

Available in Multi colours





ICU / NICU

Horizontal Bed Head Panels

MHS Bed Head Panels having following features:-

Made of Aluminum extruded Profiles

Duly Powder Coated

Fully Modular Format

Customized design as per site condition & requirement

Available in continuous BHP

*Provision for Gas Outlet, Electrical, NCS, Data Points,
Medical Rail for Suction Clamp, Document Basket, IV Pole,
Infusion Pump Pole*

Available in Multi colours





ICU / NICU

Vertical Bed Head Panels



Continuous Bed Head Panels in Emergency Room





ICU / NICU

VINYL WALL & FLOOR in NICU



Continuous Bed Head Panels in NICU





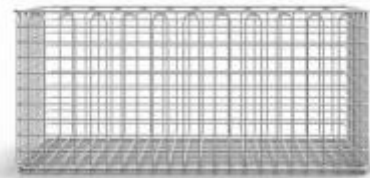
ICU / NICU

ACCESSORIES FOR ICU/NICU

MONITOR/ EQUIPMENT TRAY



SS BASKET



**CEILING MOUNTED
TELESCOPIC IV HANGER**

EXAMINATION LIGHT





ICU / NICU

CEILING PENDANTS



BP-ICU-B2



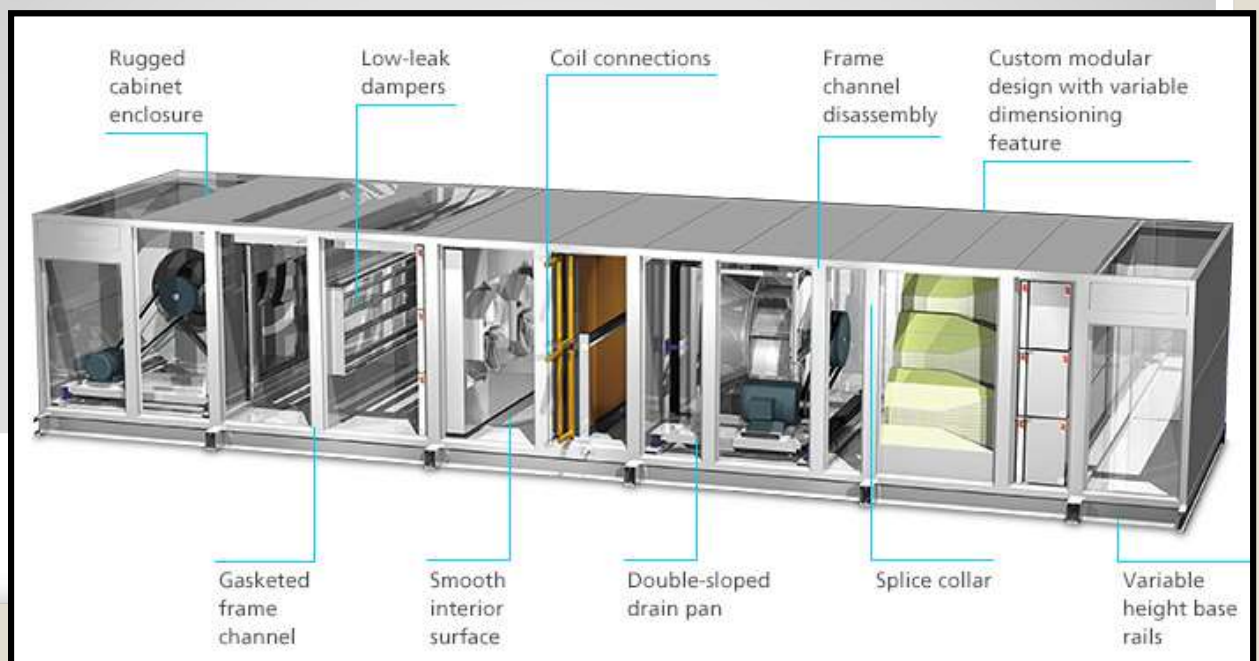
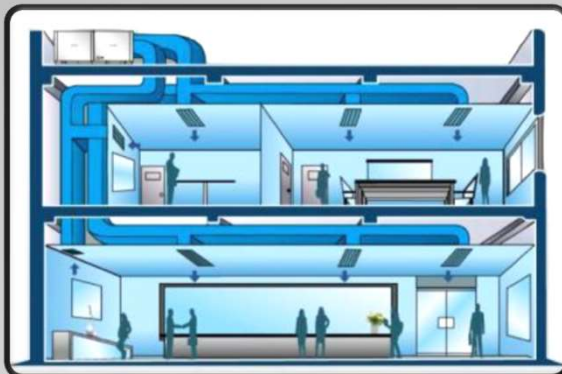
AHU: Air Handling Unit with HEPA

Air Handling Unit- Double skin PPGI sheet PUF in-filled Panels with Air mixing chamber, Pre Filter, Fine Filter, Cooling Coil, Heating Coils/ Electrical Heater with following specifications:-

CFM: 1000 – 10000

SP: 30 – 125mmwc

Damper: Fresh Air/ Return Air/ Supply Air





ICU / NICU

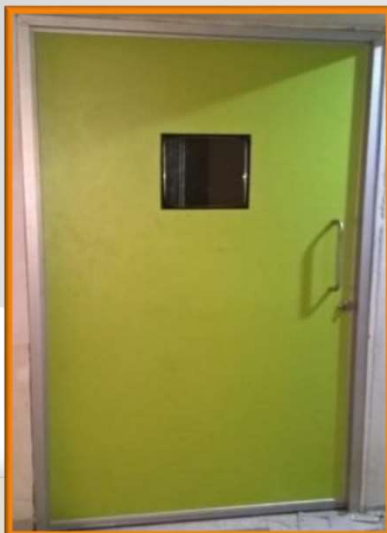
HERMETIC SEALED SLIDING DOOR

To maintain satirically and the correct air pressure in the room, all doors into and out should be of the sliding, hermetically sealing type in High Pressure Laminate / Stainless steel. Doors are operated Manually by hand free operation and Automatic by hand sensor, Foot sensor and safety beam sensor.



HERMETIC SEALED HINGED DOOR

Sealed Hinged door in High Pressure laminate suitable for OT, ICU, NICU, IVF Rooms etc. These doors are hermetic sealed with sealing Gasket & automatic drop seal.





ICU / NICU

HERMETIC SEALED HINGED DOOR



Hinged door in Stainless steel, Galvanized steel duly powder coated suitable for OT, ICU, NICU, IVF Rooms etc. These doors are hermetic sealed type with Sealing gasket & automatic drop seal.



Sealed Hinged Doors in Stainless Steel with Two Equal Leaf

Sealed Hinged Doors in CRC Steel duly Powder coated with Two Equal Leaf



Sealed Hinged Doors in Stainless Steel with Single Leaf



SEALED VIEW WINDOWS



Double Glaze Sealed windows with Motorized blind operated by wall mounted switch & Remote Operated. The view window of specified size shall be providing consisting of: Double insulated fixed glazing with not less than 5mm thick toughened glass. Window frame shall be powdered coated Aluminium of approved shape flush mounted with wall paneling. Motorized horizontal Venetian Blinds of powder coated Aluminium strips of vista level or equivalent of approved shade including necessary accessories. The motor shall be of reputed brand approved by Engineer – in – charge. The Venetian blinds should be motorized for 90 degree rotational.

WRITING LIST BOARD



One operating list board should be provided in each operating theater. It should be made of ceramic having Magnetic properties and should be flushed to the wall of the operating room.

Sealed Clean Room Lights

Peripheral lights have following features:-

- Luminaries body will be dust proof*
- Body will be made of galvanized steel duly Pre-treated & Powder Coated.*
- Protection IP 65.*
- Available in CFL & LED*
- Size : 8"x8" , 10"x10" , 12"x12" , 12"x24" , 24"x24" , 12"x48"*

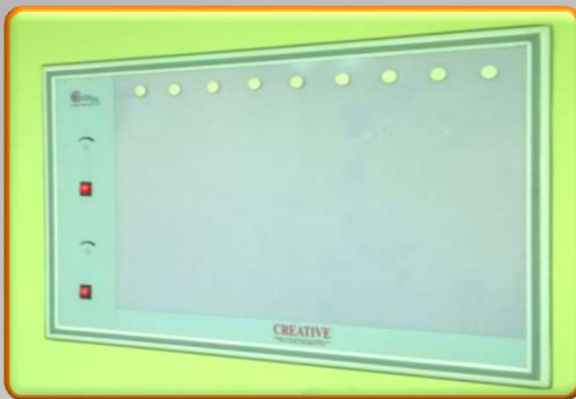


X-Ray Film Viewers

The system should have electrical safety codes for high & low voltage system. The theatre is to be equipped with a X-ray viewing screen & flush mounted with wall paneling. View screens are available in LED technology with 1 film, 2 Film, 3 Film, 4 Film as per requirement.

Housing of the X-Ray Viewer will be made of extruded aluminium & aluminium sheet duly powder coated.

Membrane type electronic control for dimming of the viewer will be provided at the bottom.





ICU / NICU SURGICAL SCRUB STATIONS

Standard Surgical Scrub Station available in 1/ 2/ 3 Bay Operated by Touch less Sensor, Foot Operated, Elbow Operated with inbuilt mixer for Hot & Cold water. It is in Stainless Steel SS304. We can make customized Scrub Stations.



3 BAY- CR SS003SF
(Sensor+ Foot Operated
with Thermostatic
Mixer)

3 BAY- CR SS003FE
(Foot + Elbow Operated
with Thermostatic Mixer)



3 BAY- CR SS003EM
(Elbow Mixer Operated)

3 BAY- CR SS003SFKK
(Sensor+ Foot +Knee Operated
with Soap Dispenser Knee &
Thermostatic Mixer, inbuilt
Geyser, Jet, Pressure Pump)





ICU / NICU SURGICAL SCRUB STATIONS

Standard Surgical Scrub Station available in 1/ 2/ 3 Bay Operated by Touch less Sensor, Foot Operated, Elbow Operated with inbuilt mixer for Hot & Cold water. It is in Stainless Steel SS304. We can make customized Scrub Stations.



2 BAY- CR SS002SF
(Sensor+ Foot Operated with
Thermostatic Mixer)

2 BAY- CR SS002F
(Foot Operated with
Thermostatic Mixer)



2 BAY- CR SS002EM
(Elbow Mixer Operated)

2 BAY- CR SS002SFT
(Sensor+ Foot Operated with
Thermostatic Mixer)





ICU / NICU SURGICAL SCRUB STATIONS

Standard Surgical Scrub Station available in 1/ 2/ 3 Bay Operated by Touch less Sensor, Foot Operated, Elbow Operated with inbuilt mixer for Hot & Cold water. It is in Stainless Steel SS304. We can make customized Scrub Stations.



CR SS001SFE
(Sensor+Foot+Elbow Operated with Thermostatic Mixer)



CR SS001SF
(Sensor+Foot Operated with Thermostatic Mixer)

CR SS001EM
(Elbow Mixer Operated)





ICU / NICU

MINI SCRUB & INSTRUMENTS WASH STATIONS

Mini Surgical Scrub Station available in 1/ 2/ 3 Bay Operated by Touch less Sensor, Foot Operated, Elbow Operated with inbuilt mixer for Hot & Cold water.



CR SM001E : Elbow Operated



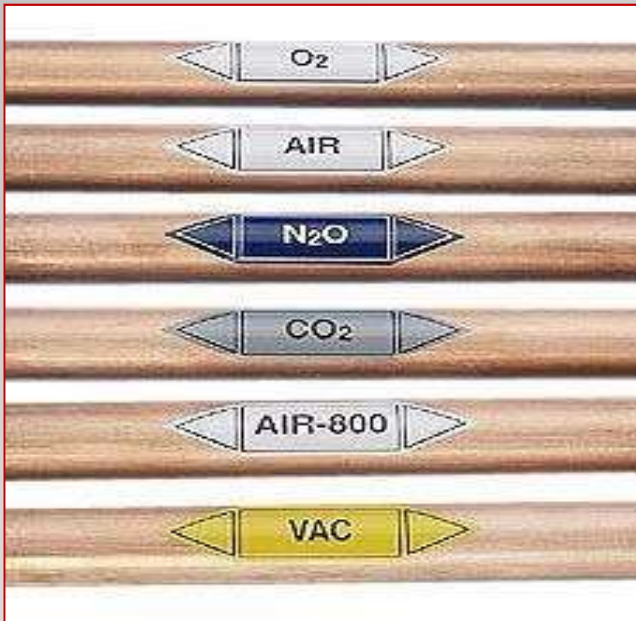
CR SM001SE : Sensor & Elbow Operated

CR SM002E : Elbow Operated



MEDICAL GAS PIPELINE SYSTEM

Copper Pipes & Fittings



All copper pipe made of phosphorus de-oxide, non-thermal copper as per IS:3075, PART - 1, Table X (IS EN10677)

Copper Tubings

All copper fittings used for medical gas pipeline system
Benefit: Ensure non-contaminated supply of gas.

Copper Fittings

Plastic saddles with screws and nut, made of brass are used to hold the copper pipes.
Benefit: Prevent corrosion. Provides better gripping of copper pipes.

Plastic Saddles

All ball valves are Italian make.
Benefit: These valves ensure non-contaminated supply of gas and also prevent fire hazard.

Isolation Ball Valves

All fittings are made of high grade extracted brass knob.

Isolation Ball Valve end fittings

We had developed a sophisticated nurse call system which helps in providing immediate attention to the desired patient.

Nurse call system

Terminal Units

Terminal units are available in a variety of sizes to ensure maximum convenience. It may be installed, panels or on ceiling products.
 All terminal outlets will have non-interchangeable whips.

Indigenous-Self sealing

Indigenous - Front loading

Indigenous - Front loading

We manufacture anti confusion Diameter Index Outlet for different medical gases.

Double locking (DIN Standard)

We manufacture anti confusion pin index outlet for different medical gases.

Emerald outlet / Parkodex

Front loading double locking

Area Alerts

The Sound Alarm is fully designed to give multiple sound and vibration and alarm indicating upon the warning.

Sound Alarm

Responsible components: Two alarm sound, two light, buzzer, alarm indicator and "off" switch. It is made of stainless steel with a corrosion resistant powder coated finish.

Diagnose Filter

Diagnose filter is used to filter the gas from the pipeline. It is made of stainless steel with a corrosion resistant powder coated finish.

Wall Suction Units

Wall Suction Unit is used to provide the gas to the patient. It is made of stainless steel with a corrosion resistant powder coated finish.

Thermal Safety Trailer

Pipe Line Assembly

Creative Engineers & Medical System

MEDICAL GAS PIPELINE SYSTEM

*Gas Manifold
Control Panel*

AREA VALVE BOX

2 Gas AREA VALVE BOX



3 Gas AREA VALVE BOX



4 Gas AREA VALVE BOX



Gas Outlet Points





ICU / NICU

MEDICAL GAS PIPELINE SYSTEM

ANALOG GAS ALARM -2Gas, 3Gas, 4Gas,



DIGITAL GAS ALARM- 2Gas, 3Gas, 4Gas, 5
gas



SUCTION TROLLEY



REGULATORs



VACUUM UNIT



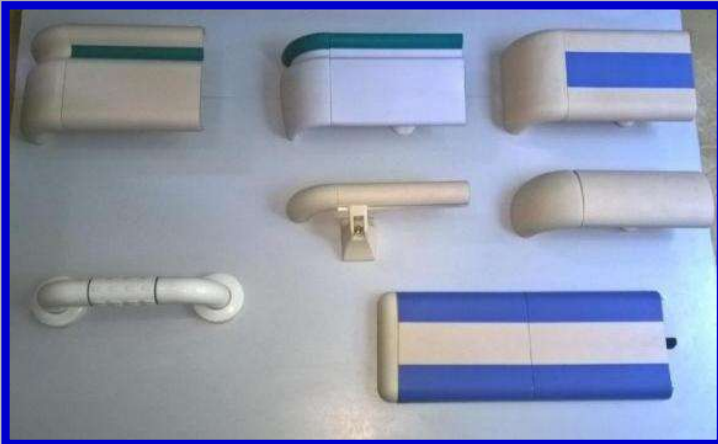
BPC FLOW METER





ICU / NICU

CRASH RAIL / WALL GAURDs & CORNER GAURD



EQUIPMENT TROLLEY

Instrument/ Equipment Trolleys are available in Aluminium duly powder coated as well as in Stainless Steel with adjustable height of racks.





NOTES

- The Features, Accessories and Specification of the products shown in the catalogue are standard, which are compatible with the leading models in the industry.
- The design, Logo, Images and Text appearing in the catalogue are the copyrighted property of Creative Healthcare Pvt. Ltd. only. Unauthorised use or tampering with the same may invite legal action.
- Our "Flag ship" products consist of MODULAR OPERATION THEATRE, ICU and MEDICAL GAS PIPELINE SYSTEMS with an impressive customer list across the country.



MODULAR HEALTHCARE SYSTEM





ICU & EMERGENCY BLOCK





CONTACTS

MODULAR HEALTHCARE SYSTEM

WORKS :

Plot No.- 37, Udyog Kendra-1, Sector Ecotech - III,
Greater Noida, Gautam Buddh Nagar,(U.P.)

PIN 201306

Near Habibpur Village

E-Mail : mhsmodularot@gmail.com,
ronak.modularot@gmail.com

Web Site: www.mhsmodularot.co.in

Mob.+91- 9968220831,09891255887

Billing Address:-

No.202, Gulmohar Estate, Pocket – E,
Sector Pi – 1, Greater Noida,
Gautama Budh Nagar (U.P.) PIN-201308

GST No.- 09BOIPK8501B1Z5